

Product: Coffin Transport Plate
Cat.-No.: MA-1303

Coffin Transport Plate

Type: 1303.1

Description

The coffin transport tray is used to transfer coffins with bodies into the body fridge by use of a Universal Transporter or a scissor type lifting unit. It is made of a strong stainless steel frame and a strong flat surface because the coffin must glide onto the surface of the plate. It will fit to our universal transporter and to our scissor type lifters.

Features

2 strong handles at both sides of the plate

2 skids

Technical Data

Material: stainless steel EN / DIN 1.4301 double polished (AISI 306)

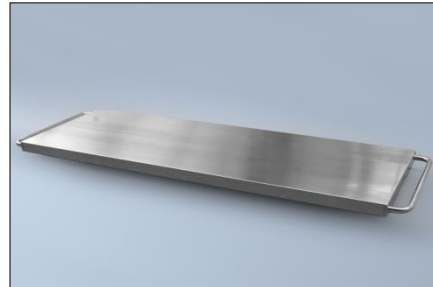
Dimensions: 2200(L) x 700(W) x 50(H)mm

Weight: 29kgs

Max. load: 300kgs

Country of Origin

Manufactured by MEDIS MT GmbH in Germany acc. to EN and German norms and the health & safety regulations of the EC and Germany!



MA-1303 Transport plate (st. st.) with skids



MA-1303 Transport plate (wood) with skids



MA-1303 mounted to MA-1360 lifter