

**Product: Autopsy-Table, standard with pedestal, stationary**  
**Cat.-No.: MA-0980**

## Standard version with sink and square pedestal, stationary

Plain work area with negative (1 drain at centre) or positive (2 drains at sides) embossment.

**Type: 980.0**

### Description

Standard autopsy table with center column in high quality execution. Work area provided with sound absorbing pad. Work surface with a negative = concave (one central drain) or positive = convex (two drains left and right) embossment.

The detachable strainer in the upper area is present to catch coarse impurities. With security locks and an overflow to protect tissue loss and constipation.

Completely encircling the edge profile with internal and external rounded corners for easy care and injury protection. Inner surfaces of the upper part complete with sound dampening coating. Completely waterproof lining.

### Features

Sink with 1 ½ "standpipe overflow valve. Warm- / cold water knee-operated mixer tap with feed preference. Flexible shower over sink, simultaneously centered in organ table automatically suspended and moved over the entire table surface.

Center column with inspection door for easy access to sanitary installations. 2 x electr. sockets, splash water proof. Silicone seal of the column in the floor area prevents penetration of fluid / bacteria into the interior.

Incl. 3 m flexible hose with quench head



MA-0980 Standard Autopsy Table with square pedestal and concave embossed worktop



MA-0980 with positive (convex) embossed plain workplate and two drains. With sliding organ table

## Optional Features

- MA-0985 Organ Table with "corian" cutting board. Perforation and side wall for organ storage  
Incl. splash guard, perforated tool storage board below dissecting area and PTFE sliding shoes which glide on the table walls. Incl. safety stop at the end of the table.

Dimensions: 850 (W) x 460 (L) x 350 (H = customized))

- elbow operated water tap
- hydro aspirator
- electrical ¾ hp grinder (disposer) below sink
- plastic work area for X-ray applications in forensic medicine
- autopsy tools / instruments on request
- head rest for adults with rubber feet (also available in rubber).
- head rest for children with rubber feet

## Optional Versions

- version without sink (length = 2100mm)
- version with turnable workplate and round pedestal (MA-0981)
- version with height adjustment and turnable workplate (MA-0983)

## Technical Data

Material: stainless steel 1.4301 DIN EN double polished for all parts  
Fittings: chrome-plated brass

Sink dimensions: 400 (L) x 500 (W) x 200 (D) mm  
Dimension: 2600 (L) x 900 (W) x 850 (H) mm

Weight: 330kgs

Sewer hookups: NW 50 with O-ring  
Hot / cold water connection through the center column: 1 / 2" copper pipe. Electrical connection through the center column: 230V, 3x1, 5mm<sup>2</sup> approx. 1000mm long, open end, fuse: 16A.

## Country of Origin

Manufactured by MEDIS MT GmbH in Germany acc. to EN and German norms and the health & safety regulations of the EC and Germany!

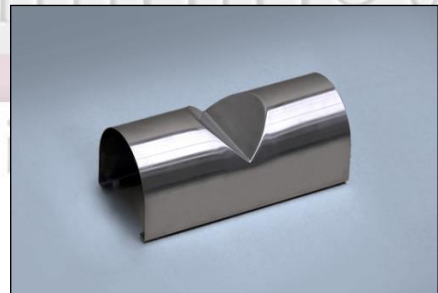
2 of 2



MA-0985 Sliding Organ Table



MA-0985 Organ table with grossing board, instrument tray and holder for shower



MA-0986 Stainless steel headrest with rubber feet (also available in full rubber)